

---

# FILETTI

FLOORING

---

**ECO OUTDOOR®**

FLOORING • WALLING • FURNITURE

LOS ANGELES • SAN FRANCISCO  
T. (855) 413 1413 [ECOOUTDOORUSA.COM](http://ECOOUTDOORUSA.COM)

## TEXTURE, TONES & TRACTION

Our Filetti range uniquely reinterprets an enduring style, traditionally found in alpine regions of Europe. Typically produced in small sizes these paving units are ideal for driveways, curved paths or can be used as an accent in conjunction with other flooring materials.

By moving outside a standard lay pattern, Filetti is a great way to break up a space and play with texture. Utilizing long, thin pieces of stone, Filetti is a format that's also sympathetic to bleeding natural stone into a landscape design.

Filetti performs like a lineal cobble. It has high strength properties and a textured surface, making it perfect for driveways and other non-slip graded areas. Endicott, Porphyry, Luca, Baton and Baguette within Filetti range are all dense stones making them hard-wearing, durable and sympathetic to wear.



## SPLIT

---



Endicott®



Luca



Porphyry

## TUMBLED

---



Garonne Baton



Pacific Bluestone Baton



Pendell Baton



Scala Baton

## SPLIT / TUMBLED

---

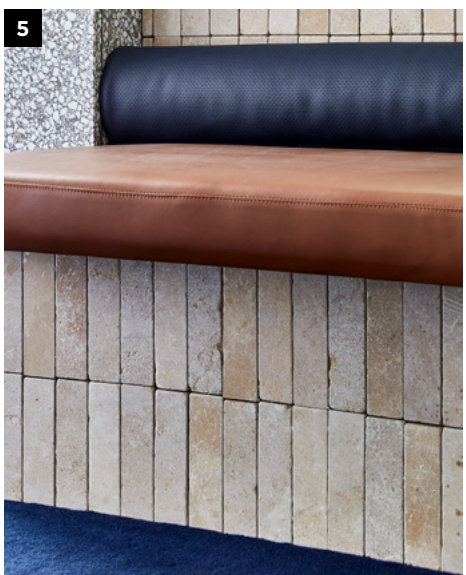
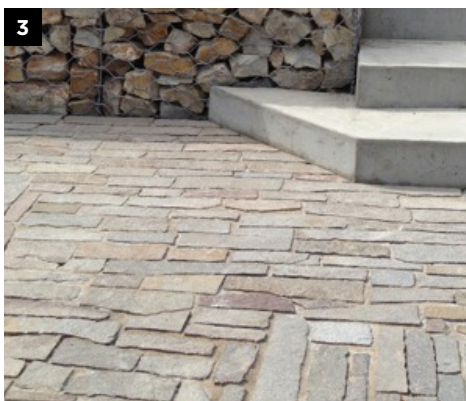


Buffalo Baguette

—

A selection of high resolution 3D textures is available at [www.ecooutdoorusa.com](http://www.ecooutdoorusa.com)





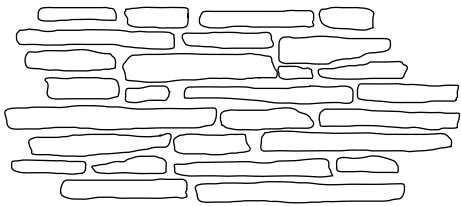
- 
1. Luca
  2. Endicott
  3. Porphyry
  4. Endicott
  5. Pendell Baton
  6. Buffalo split and tumbled
-

## SIZES

---

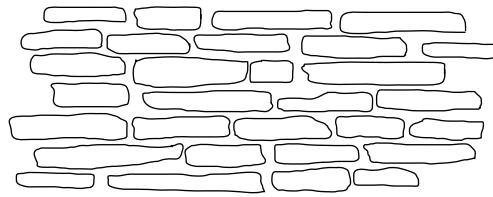
Endicott Filetti Pieces

---



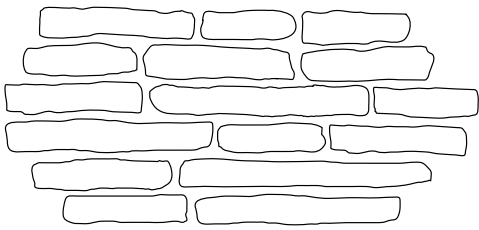
Porphyry & Luca Filetti Pieces

---



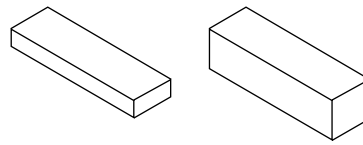
Baguette

---



Baton

---



—  
For more downloadable imagery visit [www.ecooutdoorusa.com](http://www.ecooutdoorusa.com)

<i>Imperial</i>	<i>Weight (lbs/sq ft)</i>	<i>Packing Details (ft<sup>2</sup>/crate)</i>
<b>Endicott</b>		
Filetti random length paving Width 1 ¼"-2 ½" Thickness 1 ¼"- 2"	20.48	139.93
<b>Luca</b>		
Filetti random length paving Width 1 ½"-3 ¼" Thickness 1 ½"-3 ¼"	36.87	75.35
<b>Porphyry</b>		
Filetti random length paving Width 1 ¼"-3 ¼" Thickness 1 ¼"-2"	15	129
<b>Baguette</b>		
Random lengths 6"-16" Width 4"-1 ⅛" Thickness 2"-3"	26.57	107.64
<b>Buffalo Baguette</b>		
Random Lengths 16"-24" Width 8" Thickness 2"-2 ¼"	33.11	129.17
<b>Garonne &amp; Pendell Batons</b>		
2" x 8", 1"	10.63	172.22
2" x 8", 1 ¼"	19.42	93.00
<b>Pacific Bluestone Batons</b>		
2" x 8", 1"	14.30	156.61
2" x 8", 2"	28.61	77.50
<b>Scala Batons</b>		
2" x 8", ¾"	10.45	329.38
2" x 8", 2"	22.48	131.75

<i>Metric</i>	<i>Weight (kg/m<sup>2</sup>)</i>	<i>Packing Details (m<sup>2</sup>/crate)</i>
<b>Endicott</b>		
Filetti random length paving Width 30-60mm Thickness 30-50mm	100	13
<b>Luca</b>		
Filetti random length paving Width 40-80mm Thickness 40-80mm	180	7
<b>Porphyry</b>		
Filetti random length paving Width 30-80mm Thickness 30-50mm	75	12
<b>Baguette</b>		
Random Lengths 150-400mm Widths 100-120mm Thickness 50-80mm	130	10
<b>Buffalo Baguette</b>		
Random Lengths 400-600mm Width 200mm Thickness 50-60mm	162	12
<b>Garonne &amp; Pendell Batons</b>		
50x200mm, 20mm	52	16
50x200mm, 37mm	95	8.64
<b>Pacific Bluestone Batons</b>		
50x200mm, 25mm	70	14.55
50x200mm, 50mm	140	7.20
<b>Scala Batons</b>		
50x200mm, 20mm	51	30.60
50x200mm, 50mm	110	12.24
<i>All metric measurements are accurate. All imperial measurements are nominal.</i>		

Given Filetti stones have variations in thickness, these products should ideally be laid on a 1 ¼" wet mortar / thick set bed over a concrete slab. Refer to installation tips for further information. For further information, installation tips and pricing please contact us on (855) 413 1413.